

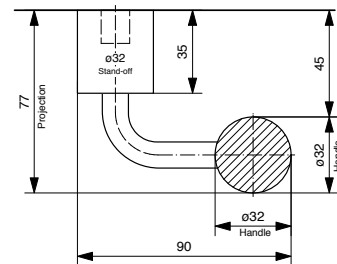
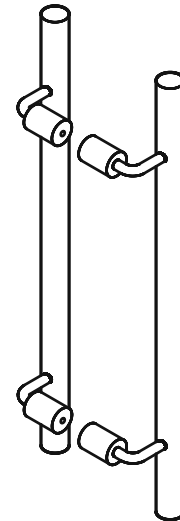


DDA Compliant - 316 Marine Grade Stainless Steel

CODE	SECTION	PROJECTION	LENGTH	CTC
BAH-180/A	Dia 32 38	77 83	400	200
BAH-180/B	Dia 32 38	77 83	500	300
BAH-180/C	Dia 32 38	77 83	600	400
BAH-180/D	Dia 32 38	77 83	700	500
BAH-180/E	Dia 32 38	77 83	800	600
BAH-180/F	Dia 32 38	77 83	900	700
BAH-180/G	Dia 32 38	77 83	1000	800
BAH-180/H	Dia 32 38	77 83	1100	900
BAH-180/I	Dia 32 38	77 83	1200	1000
BAH-180/J	Dia 32 38	77 83	1300	1100
BAH-180/K	Dia 32 38	77 83	1400	1200
BAH-180/L	Dia 32 38	77 83	1500	1300
BAH-180/M	Dia 32 38	77 83	1600	1400
BAH-180/N	Dia 32 38	77 83	1700	1500
BAH-180/O	Dia 32 38	77 83	1800	1600
BAH-180/P	Dia 32 38	77 83	1900	1700
BAH-180/Q	Dia 32 38	77 83	2000	1800
BAH-180/R	Dia 32 38	77 83	2100	1900
BAH-180/S	Dia 32 38	77 83	2200	2000
BAH-180/T	Dia 32 38	77 83	2300	2100
BAH-180/U	Dia 32 38	77 83	2400	2200

• Special sizes available upon request

FINISHES	
Standard:	SSS/PSS
Options:	Powdercoat Dulux
Electroplate:	SBN ORB BN CO

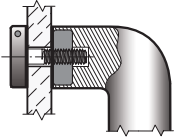


How to specify

	PRODUCT CODE	LENGTH	FINISH	FIXING	DOOR TYPE
Example:	BAH-180/A	400mm	SSS	B	GD

D = DISK FIX

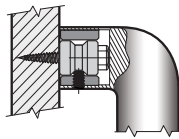
Disk fixed - Single



For Solid or Tube Handles

C = CONCEALED FIX

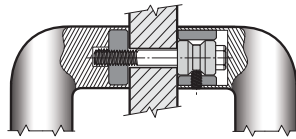
Coach Bolt fixed - Single



For Solid or Tube Handles

B = BACK to BACK FIX

Back to Back fixed - Pair



For Solid or Tube Handles

PLEASE SPECIFY THE DOOR TYPE

GD: Glass

TM: Timber

AL: Aluminium